

## Call for Entries - Window Installation Utility Works MakerSpace

The Lansdowne Arts Committee is inviting proposal submissions for temporary window installation at **Utility Works MakerSpace** for Fall 2023.

This installation will be in a showcase window at Utility Works Maker Space in Lansdowne, PA. Located on Lansdowne Avenue, the location has high foot traffic and is close to many local restaurants and businesses. This call seeks work that challenges what is expected from a window display, and uses the opportunity to present a site specific artwork. Both sculptural installation as well as work applied directly on the windows will be considered.

This is an open call exhibition with all artists welcome to apply.

To apply, please fill out the submission form [HERE](#).

Artists will be asked to provide a rendering/drawing for proposed new work, a one - two paragraph written description of the project, as well as 5 past work examples, artist statement, bio, and CV.

A \$100 honorarium will be awarded for the chosen project to help cover the expenses of the project.

Submissions Due | August 31, 2023

Notified | September 8, 2023

Installation Dates: Week of September 25, 2023

Exhibition Dates | September 29, 2022 - December 31, 2023, Viewable 24/7 from the outside at MakerSpace 18 N Lansdowne Ave, Lansdowne, PA 19050

Deinstallation Dates: Week of January 1, 2024 TBD

Questions: [Arts@LansdownesFuture.org](mailto:Arts@LansdownesFuture.org)

Applicants will be reviewed on the basis of merit and viability of proposal. Jurors will include the Lansdowne Art Committee and the proprietors of the MakerSpace.

### **About the Space**

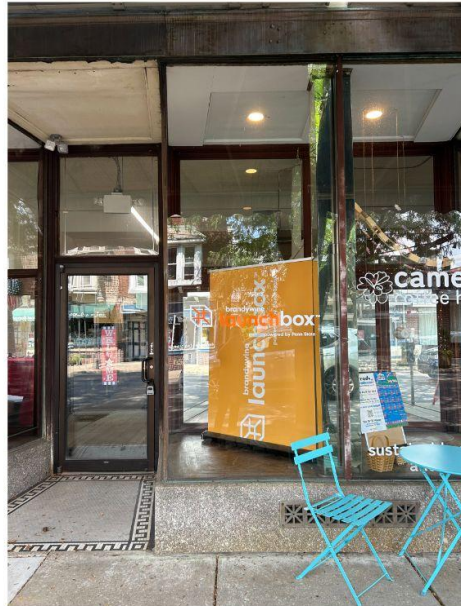
[MakerSpace](#) is operated by the LEDC (Lansdowne Economic Development Corporation), a nonprofit dedicated to the revitalization of Lansdowne Borough. In addition to MakerSpace, the LEDC manages Utility Works, the Lansdowne Farmers Market, hosts the Lansdowne Arts on the Avenue Festival, and much more. [Learn more](#) about the contributions LEDC is making to the continued growth of Lansdowne.

The installation space is roughly the shape of a cube with windows on two sides.

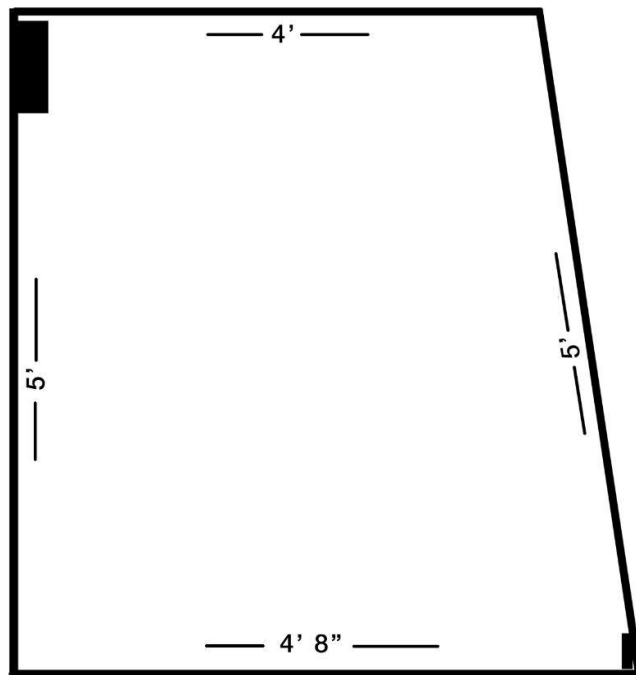
**Measurements on Page 3.** There is space for pedestals, but any pedestals used would have to be on the shorter side to be visible from street-level. Nails and/or hooks can be added to the ceiling.

**About Lansdowne Arts Committee**

The mission of the Lansdowne Arts Committee, serving on behalf of The Lansdowne Economic Development Corporation, is to create, foster, and promote Lansdowne's identity as a vibrant and inspiring artistic community. We are dedicated to nurturing creative expression, enhancing community engagement, stimulating economic growth, preserving and celebrating Lansdowne's diversity, and cultivating arts education and access. Through collaboration, innovation, and a commitment to excellence, we aim to strengthen Lansdowne's artistic ecosystem, enhance its cultural vibrancy, and create a lasting legacy that celebrates the transformative power of the arts.



STREET



Ceilings are 9'6"